



**110 HERBERT AVENUE  
MARKDALE**

# **BUNGALOW**

**INTERIOR UNIT TOWNHOME  
1068 SQ.FT.**

**MOVE-IN READY**

## **PROPERTY FEATURES:**

- \* 6' patio door out to rear deck
- \* Provisions for a 3pc basement bathroom
- \* Ensuite with upgrade 5' Shower and shower faucet
- \* Hardwood floor in the living room, dining room & kitchen
- \* Upgrade kitchen w/ 36" uppers, upper/lower valance, breakfast bar, upgrade faucet & tile backsplash
- \* Upgrade interior hardware and stained oak shaker railing
- \* Potlights

**Contact us today at 519-986-4471**

**\$529,900.00**



**DEVONLEIGH HOMES**

WEB: [DevonleighHomes.com](http://DevonleighHomes.com)

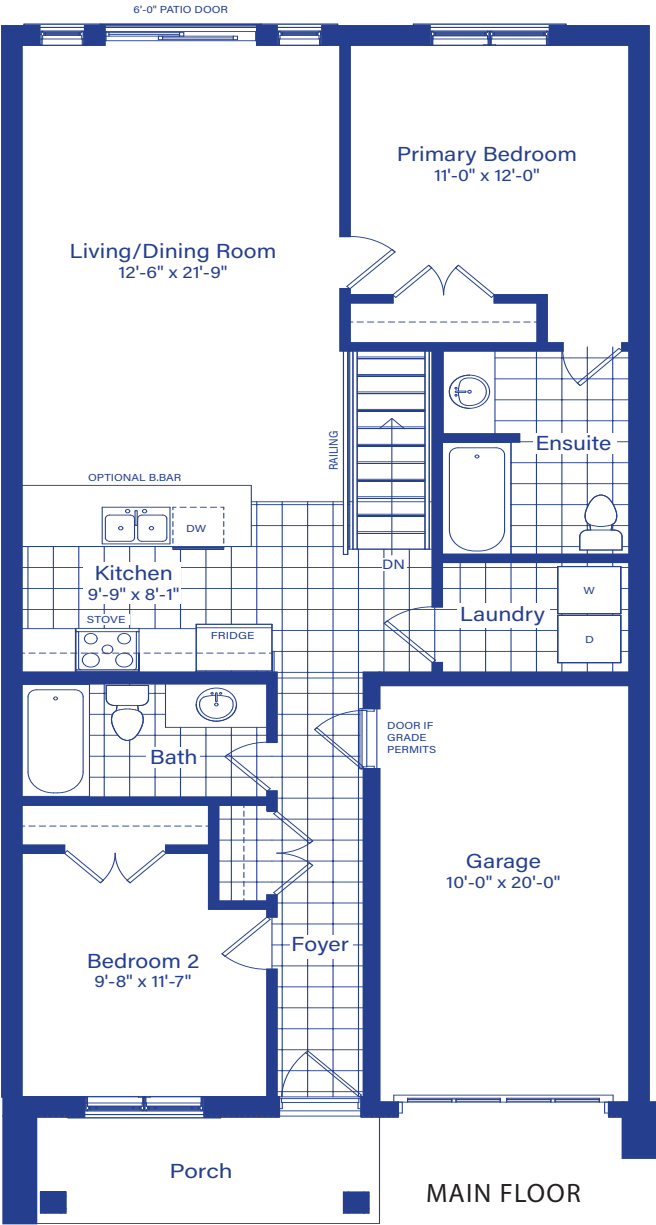
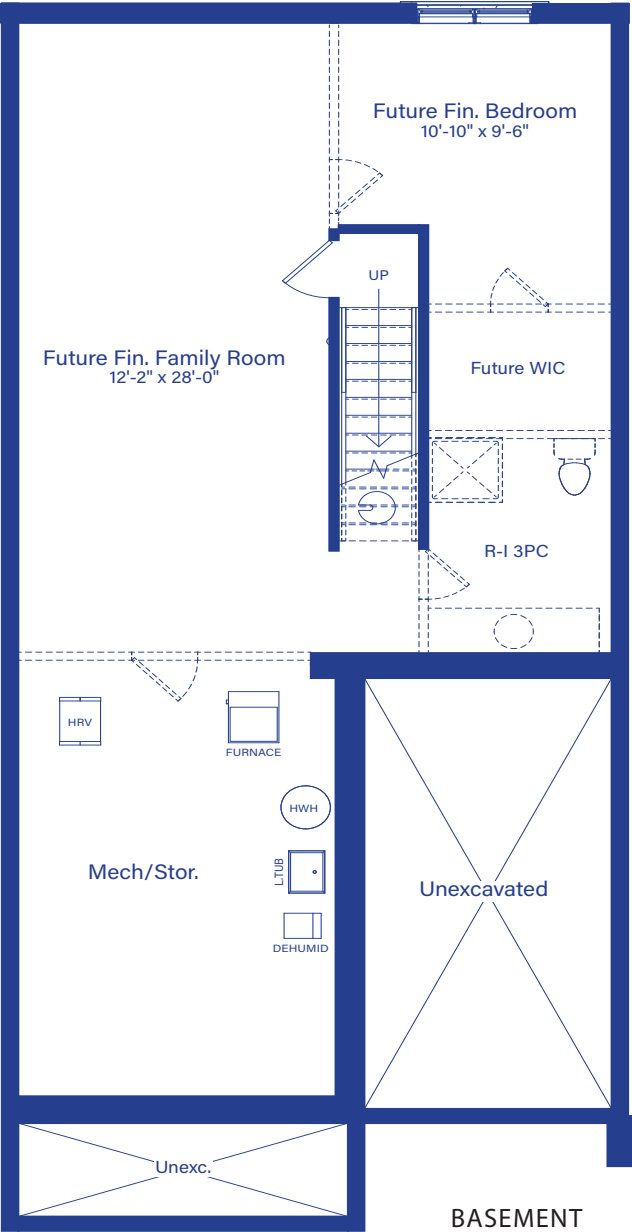
Plans and specifications are subject to change without notice.  
All renderings and photographs are artist's concept. E&O.E.

**BLOCK 99 UNIT 3 HERBERT**



# BUNGALOW (Interior Unit)

Block 99 Unit 3    110 Herbert Ave, Markdale    1068 SQ.FT.



**DEVONLEIGH HOMES**  
WEB: [DevonleighHomes.com](http://DevonleighHomes.com)

Plans and specifications are subject to change without notice. All renderings and photographs are artist's concept. E&O.E.